

सातवी - सामान्य विज्ञान (इंग्रजी माध्यम)



Maharashtra Academic Authority, Pune 30.

Educationally Progressive Maharashtra (EPM)

Test for Academic Progress : Summative Evaluation 2 : 2017-18

Standard : Seven - Subject : General Science (Written)

Student's Name : _____ Roll No. :

School's Name : _____ Div. : _____

Center : _____ Taluka : _____ District : _____ Date : / / 2018

Q. No.	1	2	3	4	5	Practical/ Oral	Total	Teacher's Signature
Marks Obtained								
Marks Allotted	10	10	10	10	10	10	60	

Write the answers of oral questions here. (Each question carries one mark.)

O 1 _____

O 2 _____

O 3 _____

O 4 _____

O 5 _____

Written Test

Instructions : 2 marks sub-questions are denoted with (2 marks) and remaining sub-questions are of 1 mark each.

Q. 1. Answer the following sub-questions as per the given instructions.

A) Which of the following group shows the need of fluoride ? Identify and encircle the correct option.

- 1) Group - I : The enamel covering of teeth, strengthening of bones.
- 2) Group - II : Strengthening of muscles, retina in the eye.
- 3) Group - III : Strengthening of bones, retina in the eye.
- 4) Group - IV : Strengthening of muscles, the enamel covering of teeth.

B) Identify and encircle the involuntary muscles from the following.

- 1) Hands
- 2) Legs
- 3) Stomach
- 4) Mouth

C) Identify the relation within first pair and correlate the other -

Stomach : Gastric juices :: _____ : Intestinal juices

D) Identify and encircle the group that describes the oesophagus in the digestive system.

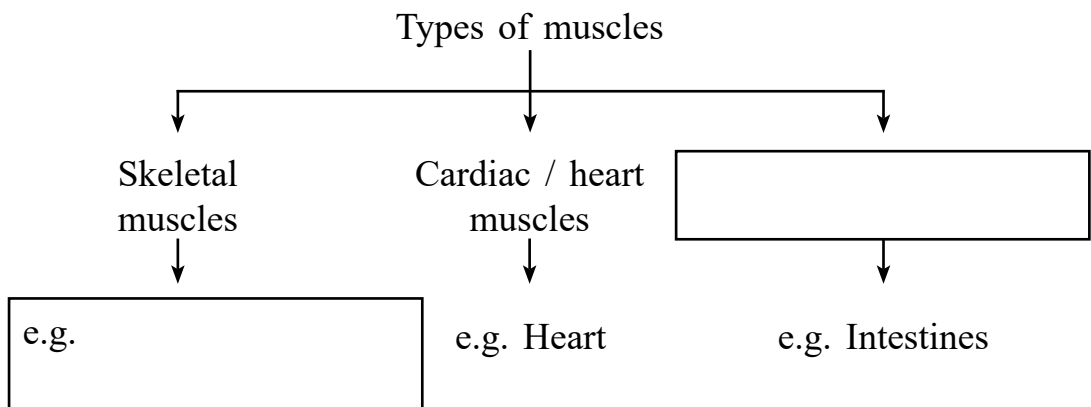
- 1) Group - I : Hands, Legs, Stomach, Heart
- 2) Group - II : Mouth, Pharynx, Oesophagus, Stomach
- 3) Group - III : Salivary glands, Pancreas, Stomach
- 4) Group - IV : Heart, Liver, Oesophagus, brain

E) Write any two remedies to prevent addiction/intoxication in the society. (2 Marks)

1) _____

2) _____

F) Complete the following concept map. (2 Marks)



G) Complete the following table with given reference points. (2 Marks)

Point	Natural detergent	Man-made detergent
Examples	_____	_____

Q. 2. Answer the following sub-questions as per the given instructions.

A) Identify and encircle the odd man out.

- 1) Ripening of fruit 2) Falling of leaves from tree
 3) Raining 4) Baking bread

B) Encircle the correct option from the following pairs of elements and its symbol.

- 1) Tungsten - W 2) Silver - Au
 3) Gold - Ag 4) Boron - Be

C) Read the following substances and encircle the correct option. Which of the following is a compound ?

- 1) Carbon dioxide 2) Oxygen
3) Magnesium 4) Iron

D) Iron articles are given a thin coat of zinc. What the process is called as ?

E) Write any two precautions that you will take while buying the food from the market. (2 Marks)

1) _____

2) _____

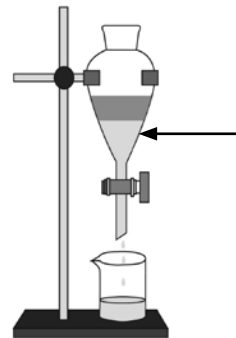
F) In the table given below, elements are classified as per its types. Observe it and complete the table. (2 Marks)

_____	_____
Gold Iron	Hydrogen Nitrogen

G) Observe the figure given below and answer the following questions. (2 Marks)

1) Name of the experiment -

2) Name the apparatus shown with an arrow -



Q. 3. Answer the following sub-questions as per the given instructions.

A) In the chart given below, minerals are classified into two groups.

Group-I	Group-II
Petrol	Methane
Diesel	CNG
Kerosene	LPG

Which of the following is useful to classify the given minerals. Identify and encircle the correct option.

- 1) Non-metal minerals
 - 2) Metal minerals
 - 3) Energy minerals
 - 4) Metalloid minerals
- B) Identify and encircle the odd man out.
- 1) Diamond
 - 2) Halite
 - 3) Ruby
 - 4) Sapphire
- C) Observe the following pairs representing the metal and its use. Encircle the wrong pair from it.
- 1) Iron - Railway
 - 2) Manganese - Medicines
 - 3) Bauxite - Aeroplanes
 - 4) Mica - Radio
- D) Identify and encircle the option which doesn't show the characteristic of CNG -
- 1) Catches fire easily
 - 2) CO₂ is formed in less quantity
 - 3) Other pollutants are produced
 - 4) Combustion can be controlled easily
- E) Write any two useful things (facilities) will be endangered if the rubber is no longer available. (2 Marks)
- 1) _____
 - 2) _____

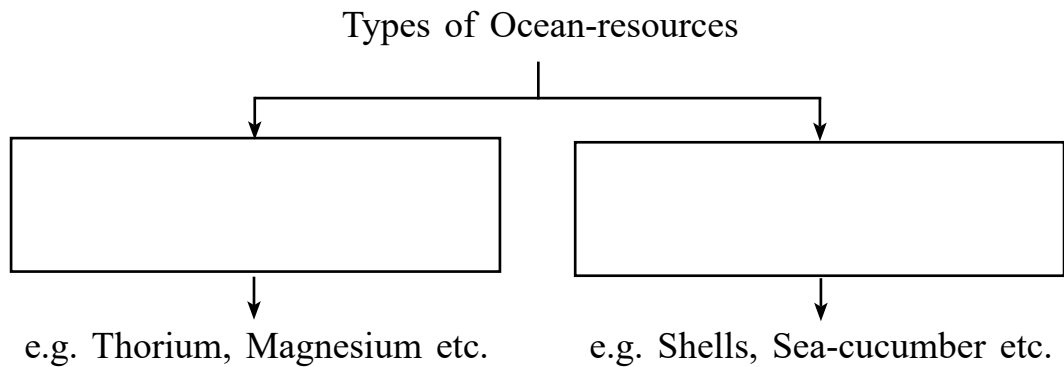
- F) The names of medicinal plants are hidden in the chart given below.
Find and write any two of them - (2 Marks)

C	I	N	C	H	O	N	A
B	C	D	A	M	L	A	D
R	T	N	J	E	I	F	U
B	U	A	K	E	G	U	L
E	L	D	L	N	H	M	S
L	S	S	H	I	R	D	A
V	I	T	M	A	C	N	B

1) _____

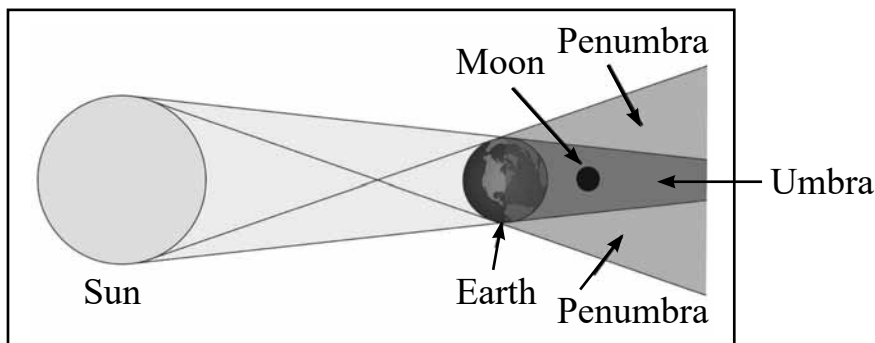
2) _____

- G) Complete the following concept map. (2 Marks)



Q. 4. Answer the following sub-questions as per the given instructions.

- A) Observe the figure given below and write the type of eclipse seen in it.



B) Which of the following colour in the sunlight is scattered most ? Identify and encircle the correct option.

1) Red

2) Yellow

3) Blue

4) Green

C) Write the correct word in the box given below.

$$\text{Frequency (n)} = \frac{1}{\boxed{\phantom{\text{Time}}}}$$

D) The sound is classified on the basis of its frequency as audible sound, infrasonic sound and ultrasonic sound. Read the following statements and encircle the correct option.

1) The sound produced by whale-fish is ultrasonic sound.

2) Barking of a dog is an infrasonic sound.

3) Chirping of birds is an audible sound.

4) The sound of leaves of a tree (Rustling of leaves) is infrasonic sound.

E) Which precautions you will take while seeing the solar eclipse ? Write any two. (2 Marks)

1) _____

2) _____

F) Who am I ? (2 Marks)

1) I am the time required to complete one oscillation by an oscillator -

2) I am the property due to which a stretched rubber returns to its original state.

G) Write any two uses of ultrasonic sound in day-to-day life. (2 Marks)

1) _____

2) _____

Q. 5. Answer the following sub-questions as per the given instructions.

A) Encircle the correct option from the pairs given below.

1) compass - High magnetism

2) Door of a wardrobe - Magnetic needle

3) Magnetic poles - Magnet

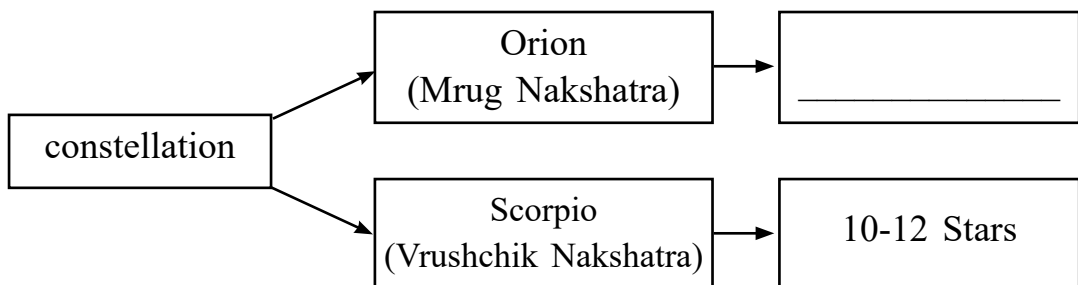
4) Repulsion - Like poles.

B) Who did putforth the concept of magnetic lines of force ? Write the name.

C) Rewrite the following statement in correct way.

If we uniformly expand earth's equator in all directions indefinitely, it will penetrate the celestial sphere along a circle. This circle is known as the ecliptic.

D) Complete the following flow-chart.



E) Write any two preparations that you will do while going-out for sky-watching. (2 Marks)

1) _____

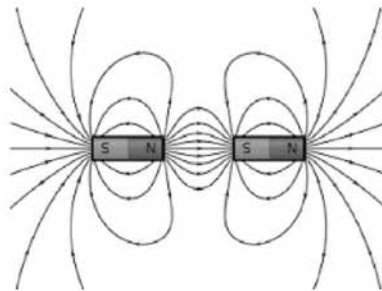
2) _____

F) Write any two examples of uses of magnet in day to day life. (2 Marks)

1) _____

2) _____

G) Observe the figure given below. Write any two properties of magnetic lines of force. (2 Marks)



1) _____

2) _____

